

**Data Sheet.**

**NAME :** pSR $\alpha$ hCRM1

**REPOSITORY REFERENCE :** ARP2013

**HOST :** E.Coli XL-1 Blues.

**DESCRIPTION OF CLONE :** This plasmid harbours cDNA for the human CRM1.

**CLONING VECTOR :** pSR $\alpha$ 296

**CLONING SITE :** AseI.

**CHARACTERISTICS :** It harbours the full length of the human CRM1 cDNA.

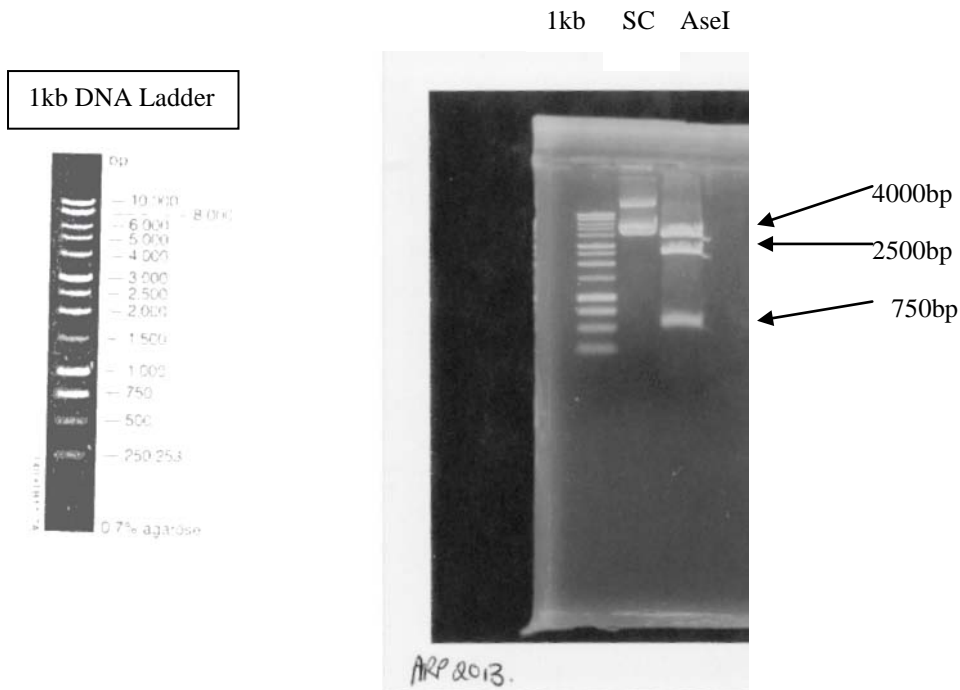
**PRESENTATION :** DNA in TE Buffer.  
100 $\mu$ l Aliquots, 400 $\mu$ g/ml. (40 $\mu$ g aliquots)

**SOURCE :** Prof. H Shida

**REFERENCE :** Hikata, Y.Umemoto, S. and Shida, H (1998); Involvement of human CRM1 (exportin 1) in the export and multimerization of the Rex protein of human T-cell leukaemia virus type 1. J. Virol 72: 6602-6607.

**RESTRICTION PATTERNS :**

Restrict plasmid with AseI – produces 750bp, 2500bp and 4000bp fragments.



**ACKNOWLEDGEMENTS :**

Publications should acknowledge the donor of the reagent and the Programme EVA Centre for AIDS Reagents. Suggested wording can be found on our website at <http://www.nibsc.ac.uk/spotlight/aidsreagent/index.html> in the “Acknowledgements” section.

Please also ensure that you send us a copy of any papers resulting from work using reagents acquired through CFAR (this can be electronically or as a paper copy)