

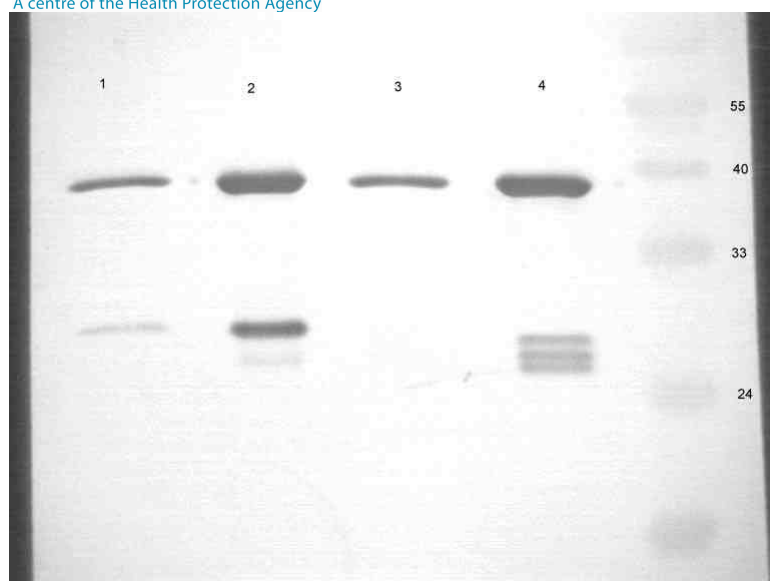
## Centre for AIDS Reagents

### Data Sheet

<b>DESCRIPTION:</b>	Recombinant p17/24 protein (C-clade consensus sequence)
<b>REPOSITORY REFERENCE:</b>	ARP695.1
<b>CHARACTERISTICS:</b>	Recombinant p17/24-C protein is expressed as His tag-fusion protein in E. coli using expression vector pET24 and purified using Talon Superflow metal affinity resin (Clontech).
<b>SOURCE:</b>	FIT Biotech Oyj Plc Eesti Filiaal, Tartu, Estonia
<b>PRESENTATION:</b>	50ug. In PBS +10% glycerol
<b>PURITY:</b>	See Fig.1 for SDS-PAGE and Fig.2 for Western blot analysis.
<b>STORAGE:</b>	Store at $-70^{\circ}\text{C}$ or less. Avoid multiple freeze-thaw cycles as product degradation may occur.
<b>ACKNOWLEDGEMENTS:</b>	Publications should acknowledge the donor of the reagent and the Centre for AIDS Reagents. Suggested wording can be found on our website in the "Acknowledgement" section at:-  <a href="http://www.nibsc.ac.uk/spotlight/centre_for_aids_reagents.aspx">www.nibsc.ac.uk/spotlight/centre_for_aids_reagents.aspx</a>  Please also ensure that you send us a copy of any papers resulting from work using reagents acquired through CFAR, this can be by e-mail or printed copy.

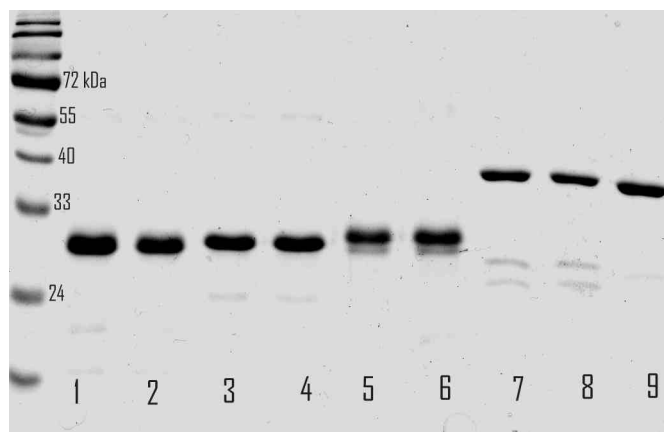
#### **PROTEIN SEQUENCE:**

MGARASVLSGGELDRWEKIRLRPGGKKKYKCLKHIVWASRELERFAVNPGLLETSEGCRQILGQLQPSL  
QTGSEELRSLYNTVATLYCVHQKIEVKDTKEALDKIEEQNKSKKKAQQAADTGNSSQVSNYPVQ  
NLQGQMVHQAI SPRTLN AWVKVVEEKAFSPEVIPMFSA LSEGATPQDLNTMLNTVGGHQAAMQMLK  
ETINEEAAEWDR LHVPVHAGPIAPGQMREPRGSDIAGTTSTLQEIQIGWMTNPPIPVGEIYKRWILGLNK  
IVRMYSPTSILDIRQGPKPEFRDYVDRFYKTLRAEQASQEVKNWMTETLLVQANPDCKTILKALGPA  
TLEEMMTACQGVGGPGHKARVLVEHHHHHH



**Figure 1.** Western blot analysis of p17/24 proteins, detected with the p24 specific monoclonal antibody 05-001, (Quattromed Ltd, Tartu, Estonia)

Lane 1- p17/24-B protein, 100 ng loaded  
 Lane 2- p17/24-B protein, 500 ng loaded  
**Lane 3- p17/24-C protein, 100 ng loaded**  
**Lane 4- p17/24-C protein, 500 ng loaded**  
 Molecular weight marker proteins are on the right side of the gel.



**Figure 2.** SDS-PAGE analysis of purified proteins (Coomassie staining)

Lane 1- Nef-A 1µg  
 Lane 2- Nef-A low endo, 1µg  
 Lane 3- Nef-B 1µg  
 Lane 4- Nef-B low endo 1µg  
 Lane 5- Nef-C 1µg  
 Lane 6- Nef-C low endo 1µg  
 Lane 7- p17/24-B 1µg  
 Lane 8- p17/24-B low endo 0.8µg  
**Lane 9- p17/24-C 1µg**