

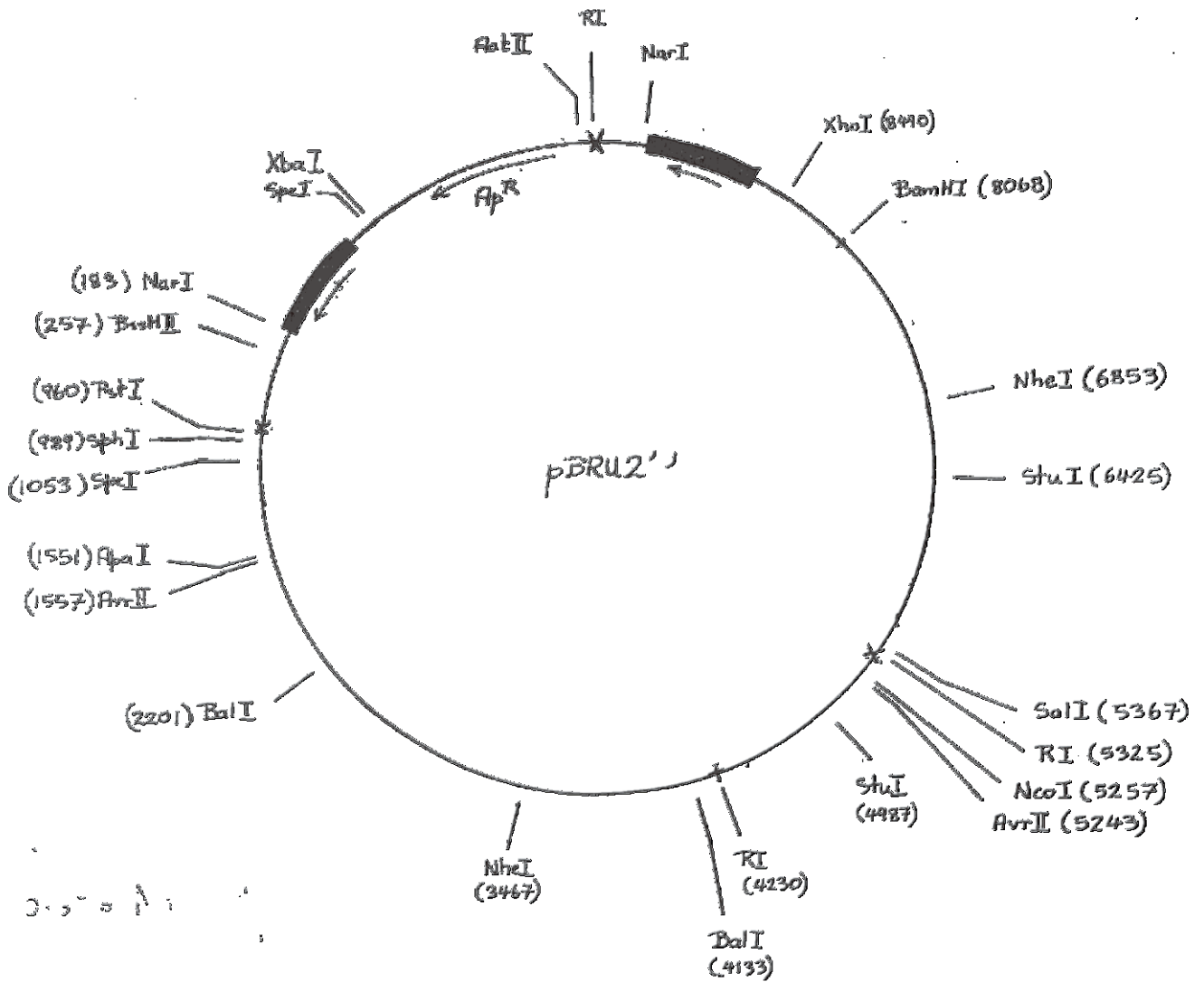
Centre For AIDS Reagents

Data Sheet

NAME:	pLAI.2 (formerly pBRU2)
REPOSITORY REFERENCE:	EVA202
HOST:	JM109
DESCRIPTION OF CLONE:	Full length (12Kb) insert of HIVBRU (LAV)
CLONING VECTOR:	pKP59
PRESENTATION:	25µg aliquots of DNA (405µg/ml) in TE Buffer
CHARACTERISTICS:	Produces infectious virus in PBL's, CD4+ T-cell lines and U937 cells.
SOURCE:	Dr J M Becket.
REFERENCE:	Wain-Hobson S et al (1995), Cell 40 : 9
ACKNOWLEDGEMENTS:	Publications should acknowledge the donor of the reagent and the Centre for AIDS Reagents. Suggested wording can be found on our website in the "Acknowledgement" section at:-

www.nibsc.org/science_and_research/virology/centre_for_aids_reagents.aspx

Please also ensure that you send us a copy of any papers resulting from work using reagents acquired through CFAR, this can be by e-mail or printed copy



Infectious in PBL
CEM clone 13
SupT1
+ 4937

Isolate 90-1 ~ 12 kb

pBRU2

RESTRICTION PATTERNS:

Cut with HINDIII (Fragments arranged by size: 3596, 3235, 3000 (Vector), 1082, 633, 831, 105 (Too small to see))

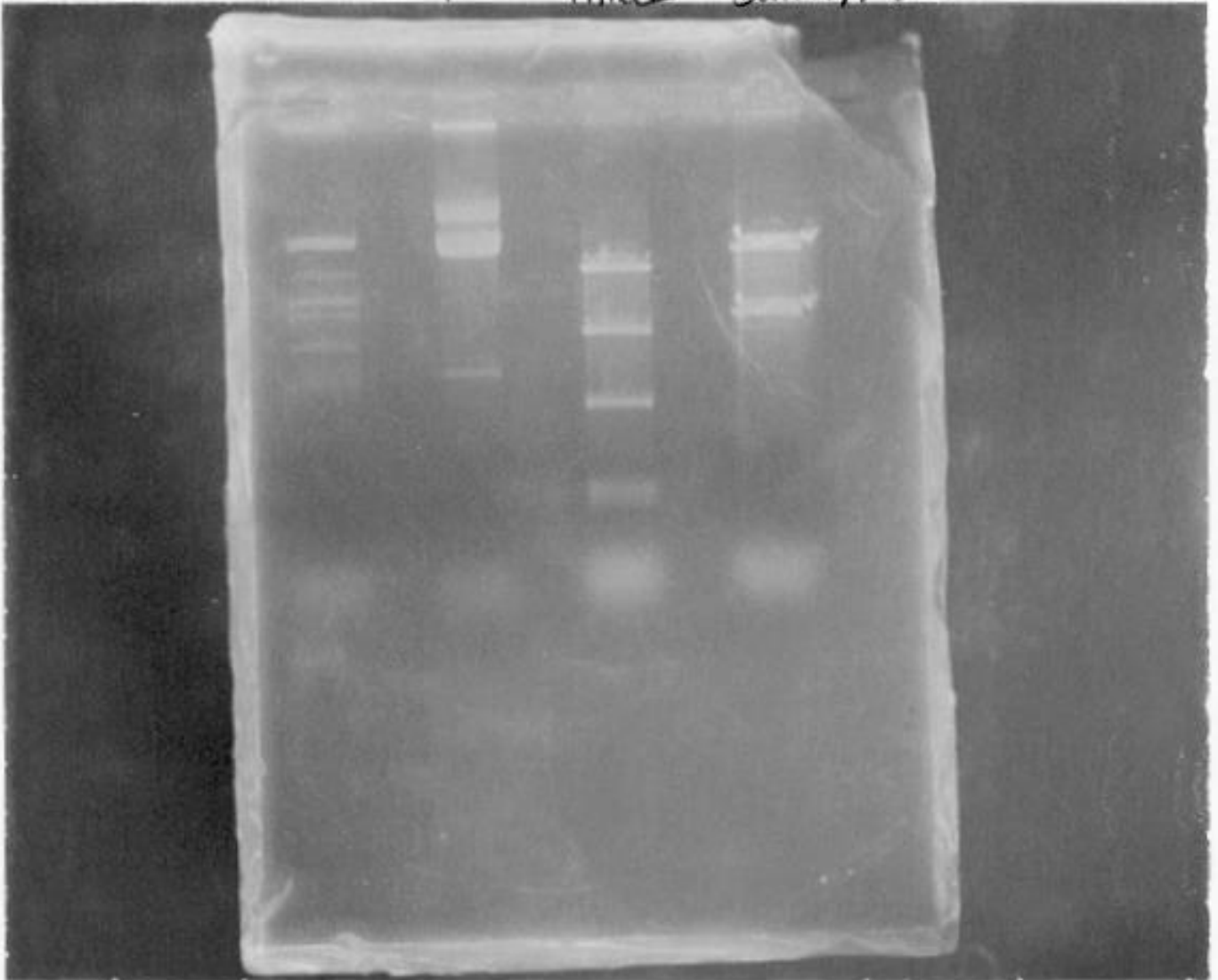
Cut with Xba1 and BamHI Fragments arranged by size: 7500bp, 4500bp.

Marker λ cl₈ band sizes: :

11381, 10493, 4398, 4203, 3674, 2614, 1916, 1806,
1703, 1112, 972, 657, 621, 537, 384.

HRP202

λ cl₈ Supercloned HindIII BamHI/XbaI



Maxiprep