

Data Sheet

NAME: A3.01/CCR5-A5

REPOSITORY REFERENCE: ARP067

CAUTION: This cell line may be contaminated with gamma-retroviruses. The information is contained within a manuscript in the *Journal of Virology* (Takeuchi Y, McClure M and Pizzato M. Identification of γ -retroviruses constitutively released from cell lines used for HIV research. *J Virol*, 2008 [*in press*]).
See next page for Assay and WB results.

SPECIES/TYPE: CD4 T cell line.

SPECIAL CHARACTERISTICS: Clone of A3.01, A5 express CCR5 on its surface. It is resistant to 2mg/ml G418 and is infectable by different NSI viruses. It also fuses in the presence of different NSI envelope

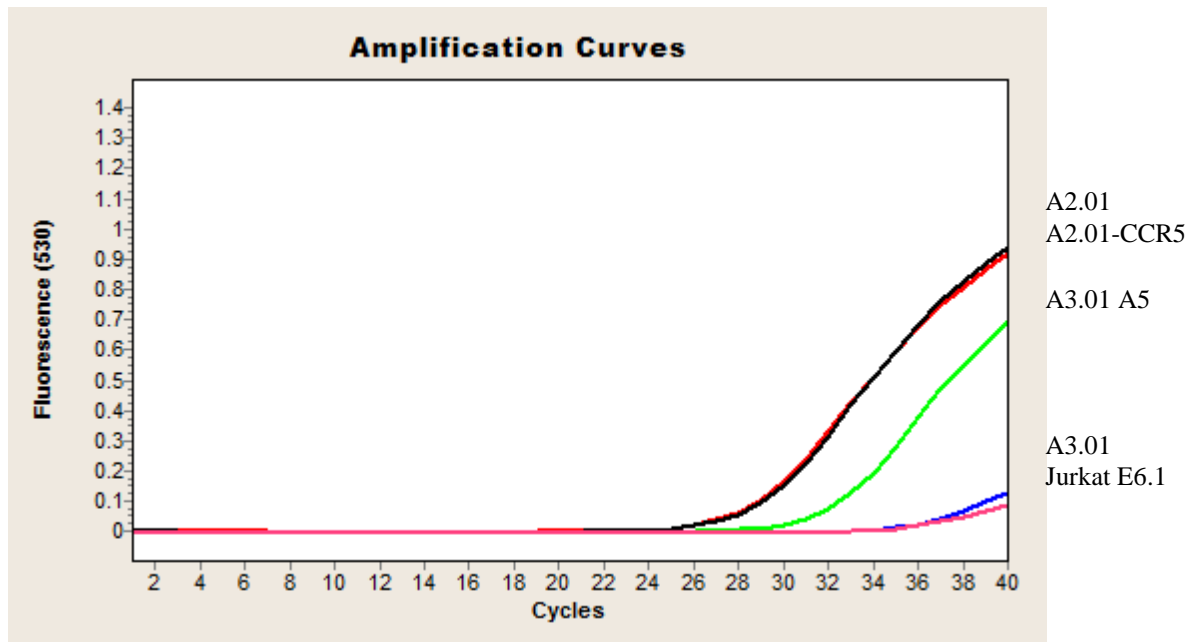
CULTURE MEDIUM: RPMI 1640, 90%
Foetal calf serum, 10%
Supplement with 1mg/ml G418.

STORAGE: Liquid nitrogen

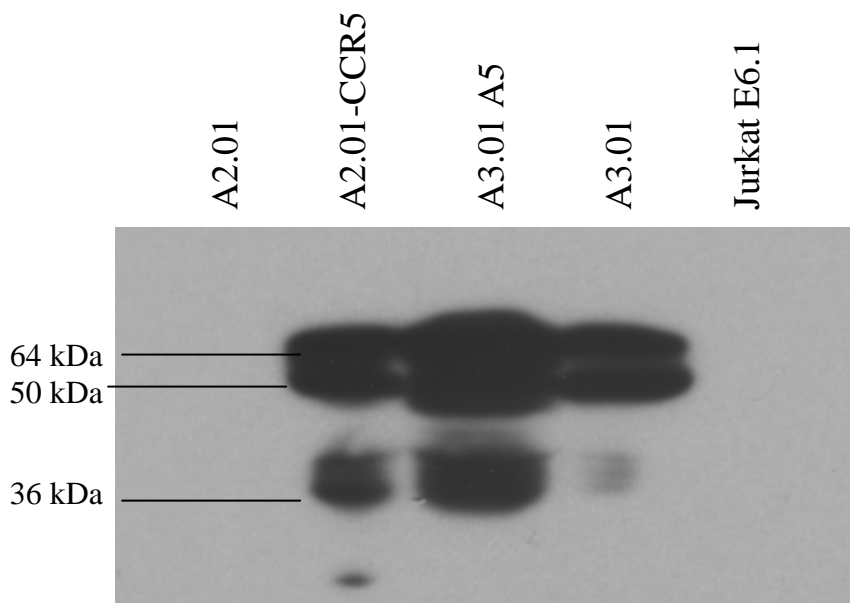
SOURCE: Dr Q. Sattentau

ACKNOWLEDGEMENTS: Publications should acknowledge the donor of the reagent and the Programme EVA Centre for AIDS Reagents. Suggested wording can be found on our website at <http://www.nibsc.ac.uk/spotlight/aidsreagent/index.html> in the "Acknowledgements" section.
Please also ensure that you send us a copy of any papers resulting from work using reagents acquired through CFAR (this can be electronically or as a paper copy)

SG-PERT (RT assay)



Cell culture supernatants (10 ml) were subjected to ultracentrifugation and pellets were tested. Supernatant derived from Jurkat E6.1 was used as negative control.



Western Blotting

Gamma-retrovirus Gag detected in cell lysates.

Equal amounts of cells ($2E+06$) were lysed with RIPA buffer and gammaretrovirus gag was detected by Western blotting using an anti-CA antibody.

Lysate from Jurkat E6.1 was used as negative control.